

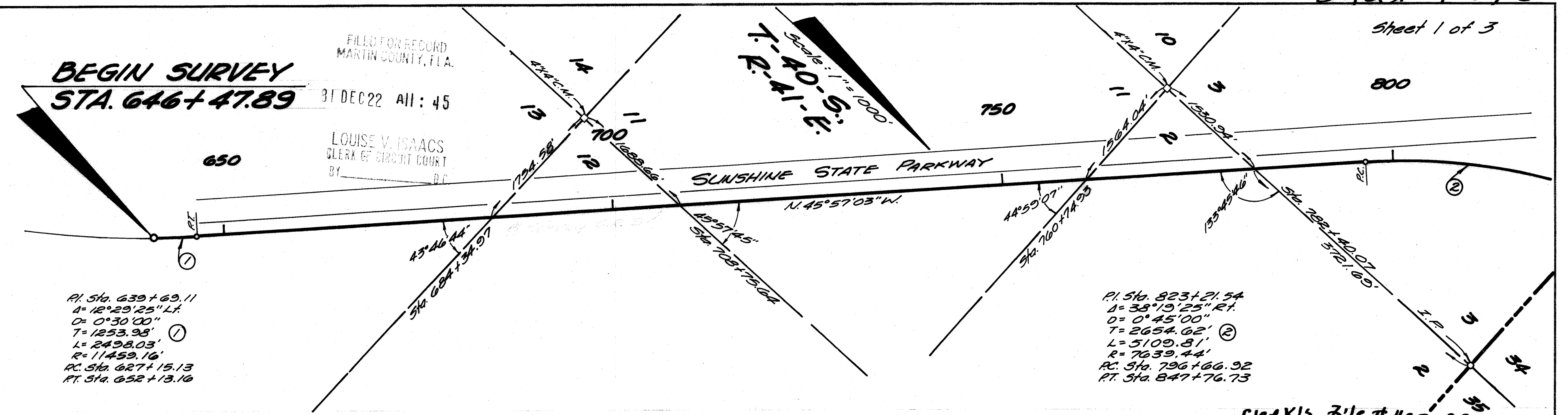
BEGIN SURVEY
STA. 646+47.89

FILED FOR RECORD
MARTIN COUNTY, FLA.

31 DEC 22 AM: 45

LOUISE V. ISAACS
CLERK OF CIRCUIT COURT
BY _____ D.C.

Scale: 1" = 1000'
P. 40-9
P. 41-5



PI. Sta. 639+69.11
 A= 12° 29' 25" Lt.
 D= 0° 30' 00"
 T= 1253.98'
 L= 2498.03'
 R= 11459.16'
 PC. Sta. 627+15.13
 PT. Sta. 652+13.16

PI. Sta. 823+21.54
 A= 38° 19' 25" Rt.
 D= 0° 45' 00"
 T= 2654.62'
 L= 5109.81'
 R= 7639.44'
 PC. Sta. 796+66.92
 PT. Sta. 847+76.73

STATE OF FLA.
 Department of Transportation
 1317 N.E. Fourth Avenue
 Fort Lauderdale, Florida 33301

I, Paul N Pappas, as Acting Secretary of the State of Florida Department of Transportation, do hereby certify that this map is the Official Map of Location and Survey of a portion of Section 89095 designated as a part of State Road 9 in Martin County, Florida: Said portion of Section 89095 extending from a point in Section 13, Township 40 South, Range 41 East Northwesterly to a point on the North line of Section 8, Township 39 South, Range 41 East.
 Prepared and adopted by the State of Florida Department of Transportation under provisions of Section 335.02, Florida Statutes of 1955.

DN Pappas
 Acting Secretary
 State of Florida Department of Transportation

Attest: Joyce A. Yawn
 Executive Secretary

Approved: W.A. [Signature]
 Engineer of Right of Way
 Date: 12-9-81
 Sec. 89095

CLERK'S FILE # 428899
 Filed for record in the Office of the Clerk of the Circuit Court for the County of Martin, State of Florida, in ~~Book 8~~ Book 8, Page 85, on the 22nd day of December, A.D. 1981.

Louise V. Isaacs
 Clerk of the Circuit Court
 Martin County, Florida
 S.R. 9
 By Charles B. [Signature] D.C.